



# TERMOCOM

S i s t e m i s c a r i c o f u m i

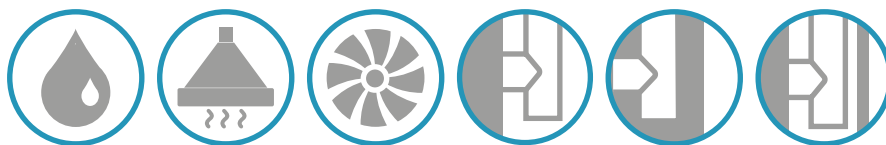


**DOPPIA PARETE POLIPROPILENE - RAMATO**  
**POLYPROPYLENE - KOPPER DOUBLE WALL**

## **Serie RP**

# Serie RP

## Sistema doppia parete polipropilene - ramato *Polypropylene - kopper double wall system*



Il sistema **doppia parete PPs-ramato Serie RP** è composto da elementi componibili rigidi, realizzati in polipropilene arricchito di spessore minimo 1,5 mm e protetti da una parete esterna in acciaio inox effetto ramato, conformi agli standard previsti dalla marcatura CE secondo la normativa EN 14471. Gli elementi modulari hanno innesto classico a bicchiere maschio-femmina calibrato con guarnizione di tenuta a triplice labbro, conforme alla normativa europea EN 14241-1. Il sistema è adatto a ricevere i fumi con temperatura massima di esercizio fino a 120 °C e pressione massima 200 Pa.

### Riferimento normativo e designazione

Marcatura prodotto secondo normativa europea CE 0476 EN 14471.  
T120 P1 W 2 000 LE E UO  
T120 H1 W 2 000 LE E UO

### Utilizzo

Sistema fumario e canale da fumo plastico asserviti a generatori a condensazione, cappe cucina per uso domestico.

### Applicazione

Installazione interna ed esterna.

### Diametri disponibili - mm

80/100 - 100/120

**GUARNIZIONI IN EPDM E FASCETTE COMPRESSE E MONTATE.**

***Double wall PPs-kopper Serie RP** system is composed by modular rigid elements, made of polypropylene, minimum thickness of 1.5 mm and protected by an external wall in stainless steel kopper effect, according to the standards set out by the European CE mark, EN 14471. The modular elements have classic male-female junction calibrated with triple seal lip gasket, conforming to European standard EN 14241-1. The system is suitable to receive flue gases with a maximum operating temperature of 120 °C and maximum pressure of 200 Pa.*

### Normative references and designations

*Product marking according to the European standard CE 0476 EN 14471.  
T120 P1 W 2 000 LE E UO  
T120 H1 W 2 000 LE E UO*

### Utilizations

*Flue systems and flue duct subservient to condensation generators, domestic kitchen hoods.*

### Application

*Internal and external installation.*

### Available diameters - mm

*80/100 - 100/120*

**ALL THE ITEMS ARE COMPLETE OF EPDM SEALS AND LOCKING BANDS.**

► **SI SCONSIGLIA** l'installazione di camini / canne fumarie in acciaio inossidabile in locali chiusi dove nell'atmosfera si concentra una forte quantità di vapori alogeni come lavanderie, tintorie, tipografie, saloni di acconciature, cosmesi e simili. Se ciò avvenisse, decadrebbe ogni tipo di responsabilità e garanzia.

◀ **WE DO NOT RECOMMEND** the use of stainless steel chimneys systems where there is a presence of any halogens in the atmosphere. In installations where this may occur, such as the use of chimney in laundries, dry cleaners', printing premises, hairdressers, cosmetic salons and similar any responsibility and product guarantee's will be invalid.

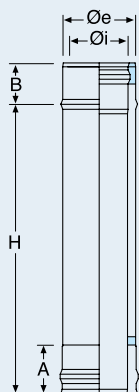


## RP01...



Elemento lineare da 1 m.

*Pipe 1 m.*



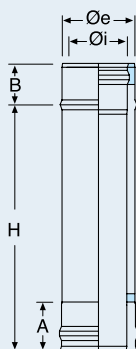
Øi	Øe	COD.	A	B	H
80	100	RP01080	65	54	940
100	120	RP01100	65	54	940

## RP02...



Elemento lineare da 0,50 m.

*Pipe 0.50 m.*



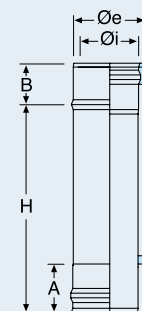
Øi	Øe	COD.	A	B	H
80	100	RP02080	65	54	440
100	120	RP02100	65	54	440

## RP03...



Elemento lineare da 0,25 m.

*Pipe 0.25 m.*



Øi	Øe	COD.	A	B	H
80	100	RP03080	65	54	190
100	120	RP03100	65	54	190

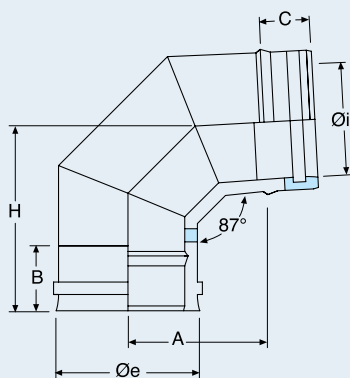
# Serie RP

## RP04...



Curva a 87°.

Elbow 87°.



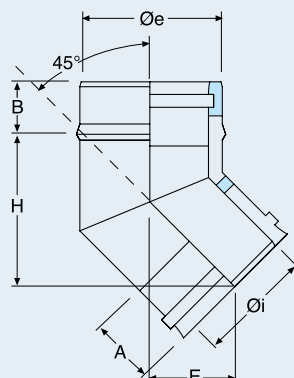
Øi	Øe	COD.	A	B	C	H
80	100	RP04080	91	65	54	154
100	120	RP04100	96	65	54	154

## RP07...



Curva a 45°.

Elbow 45°.



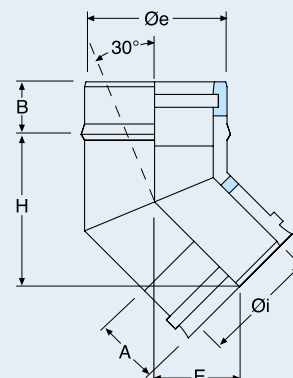
Øi	Øe	COD.	A	B	E	H
80	100	RP07080	65	54	35	95
100	120	RP07100	65	54	38	100

## RP06...



Curva a 30°.

Elbow 30°.



Øi	Øe	COD.	A	B	E	H
80	100	RP06080	65	54	48	139
100	120	RP06100	65	54	48	139

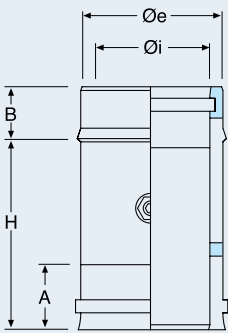


## RP19...



Elemento per prelievo fumi.

*Fumes test section with threaded sleeve.*



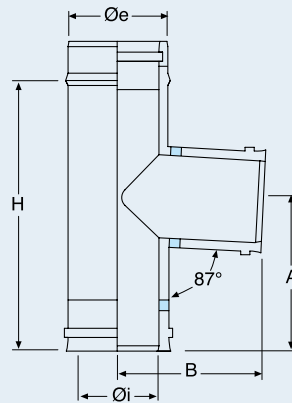
Øi	Øe	COD.	A	B	H
80	100	RP19080	65	54	190
100	120	RP19100	65	54	190

## RP15...



Raccordo a "T" 87°.

*87° tee.*



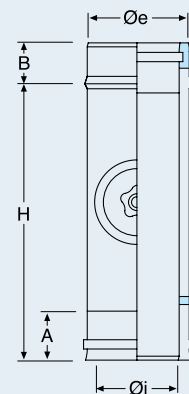
Øi	Øe	COD.	A	B	H
80	100	RP15080	120	130	190
100	120	RP15100	160	140	270

## RP27...



Elemento con portello tondo per ispezione.

*Element with round test point.*



Øi	Øe	COD.	A	B	H
80	100	RP27080	65	54	190
100	120	RP27100	65	54	270

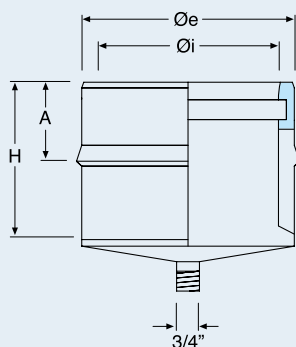
# Serie RP

## RP24...



Scarico condensa.

*Tee cap with condense drain.*



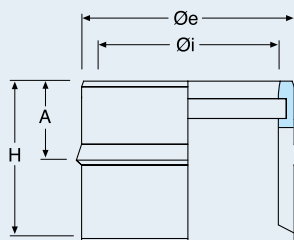
Øi	Øe	COD.	A	H
80	100	RP24080	54	65
100	120	RP24100	54	65

## RP25...



Tappo cieco.

*Tee cap.*



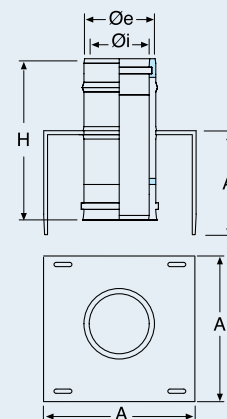
Øi	Øe	COD.	A	H
80	100	RP25080	54	65
100	120	RP25100	54	65

## RP14...



Supporto murale compreso di coppia supporti.

*Wall support with cantilever brackets.*



Øi	Øe	COD.	A	H
80	100	RP14080	200	192
100	120	RP14100	220	192

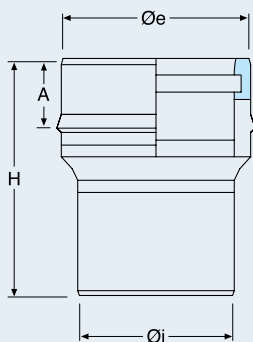


## RP18...



Raccordo caldaia.

*Boiler adaptor.*

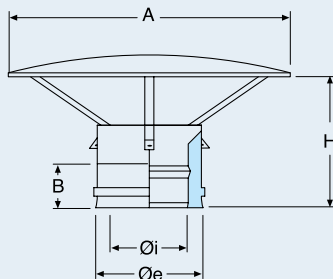


## RP11...



Cappello cinese.

*Rain cap.*

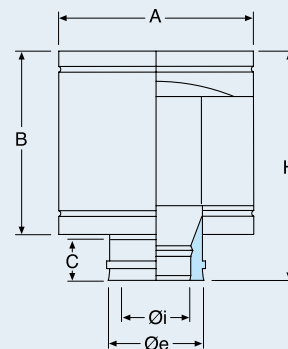


## RP35...



Terminale anti intemperie.

*Anti draught terminal.*



$\varnothing i$	$\varnothing e$	COD.	A	H
80	100	RP18080	54	250
100	120	RP18100	54	250

$\varnothing i$	$\varnothing e$	COD.	A	B	H
80	100	RP11080	230	65	205
100	120	RP11100	289	65	205

$\varnothing i$	$\varnothing e$	COD.	A	B	C	H
80	100	RP35080	200	185	65	240
100	120	RP35100	250	185	65	240

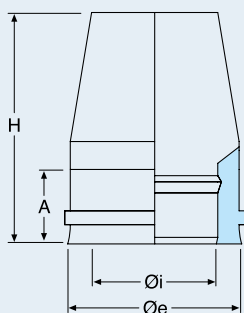
# Serie RP

## RP17...



Terminale tronco conico.

*Venturi cone terminal.*

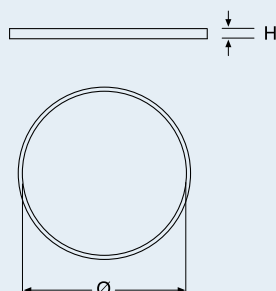


## L316EX3GN...



Guarnizione di tenuta in EPDM nero.

*EPDM black seal.*

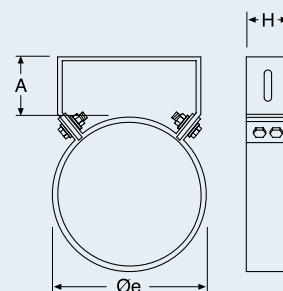


## RP12...



Collare a muro.

*Wall bracket.*



Øi	Øe	COD.	A	H
80	100	RP17080	65	235
100	120	RP17100	65	235

Øi	Øe	COD.	H
80	100	L316EX3GN08	10
100	120	L316EX3GN10	10

Øi	Øe	COD.	A	H
80	100	RP12080	50	40
100	120	RP12100	50	40



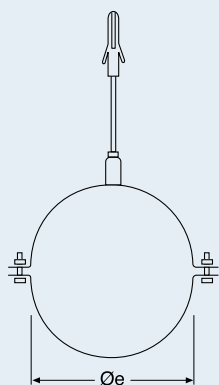


## RP29...

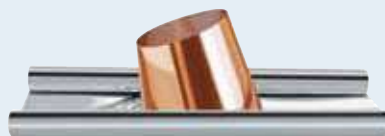


Collare a muro con tassello.

Wall bracket with anchor bolt.

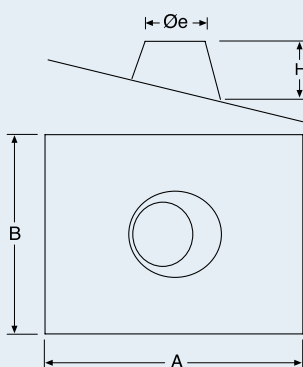


## RP16...



Faldale regolabile da 5° a 30° con base in alluminio.

Adjustable flashing from 5° to 30° with aluminum base.

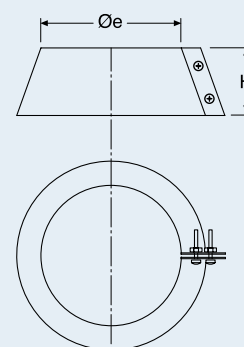


## RP22...



Fascetta anti intemperie.

Storm collar.



$\varnothing_i$	$\varnothing_e$	COD.
80	100	RP29080
100	120	RP29100

$\varnothing_i$	$\varnothing_e$	COD.	A	B	H
80	100	RP16080	750	450	120
100	120	RP16100	750	450	130

$\varnothing_i$	$\varnothing_e$	COD.	H
80	100	RP22080	100
100	120	RP22100	100

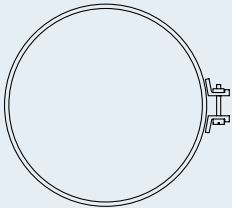
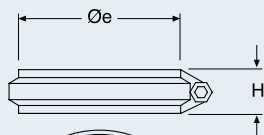
# Serie RP

## RP05...



Fascetta di sicurezza.

*Locking band.*



## LUBGN



Lubrificante per guarnizione.

*Lubricant for seal.*

Øe	COD.	H
100	RP05080	20
120	RP05100	20

COD.
LUBGN